
The State of The Department of Public Health

FY 2000-2001

September 4, 2001

Topics

- Department Organization
- Academic Activities
- Faculty/Staff
- Kips Bay Renovation
- Grants/Contracts
- Educational Activities
- Finances
- Public Relations and Events

Department Organization

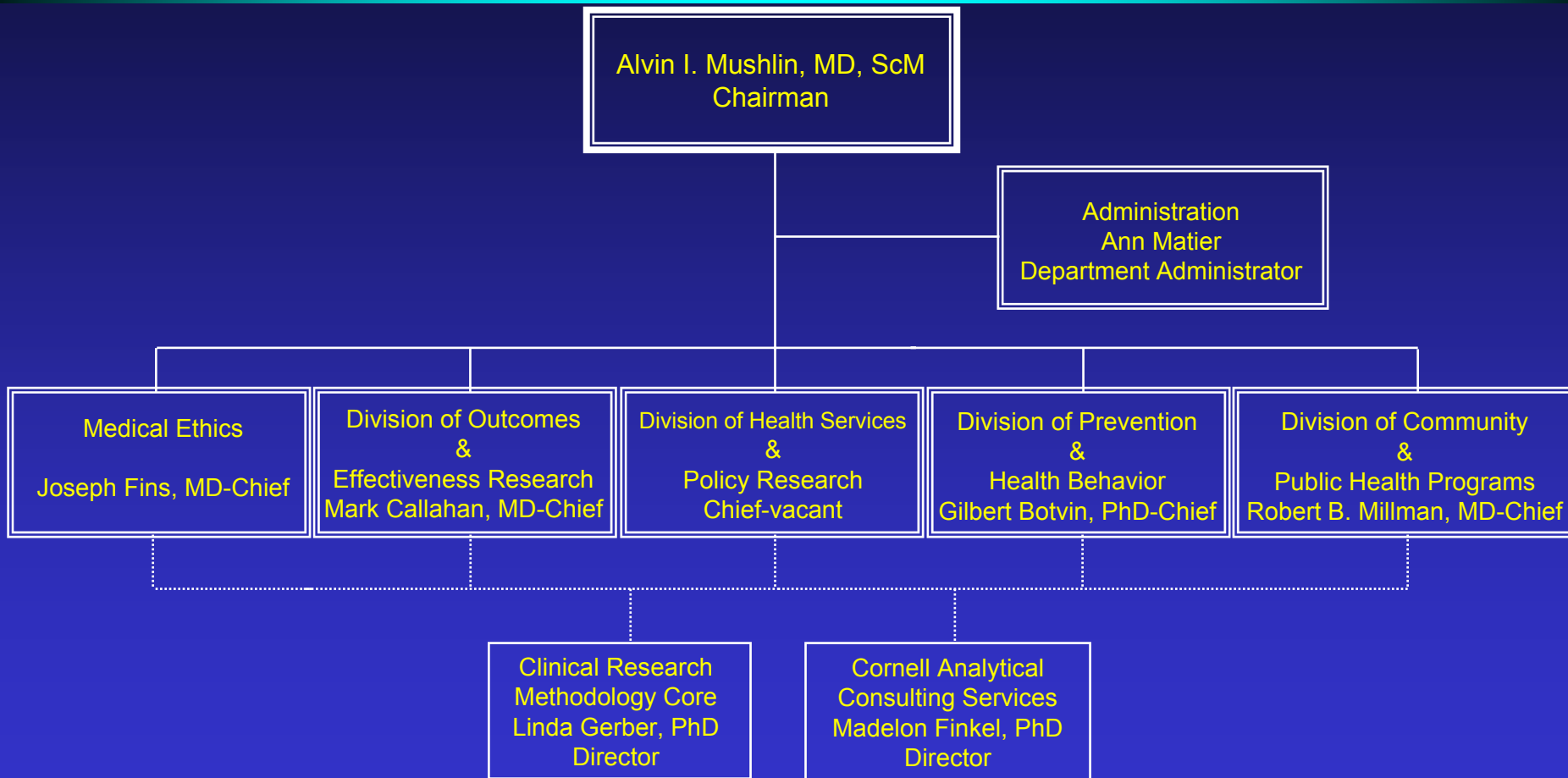
New Units

A red starburst graphic with the word "New" written inside in white text.

New

- Clinical Research Methodology Core - Launched September 2000
- Cornell Analytic/Consulting Services - First Contracts November 2000
- Division of Medical Ethics - Established January 2001
- Adult Services Clinic, Division of Community & Public Health Programs - Transferred to Public Health January 2001

Department Organization




Academic Activities

Meetings

of meetings held

- Faculty Council 8
- General Faculty 4
-  ➤ Administration 1

Seminars

- Academic/Research Conference Series 9
- Journal Club 10
- Guest Speakers (Recruitment Candidates, Outside Colleagues, etc) 12
-  ➤ Research In Progress Series Launched May 2001 2

Special Events

-  ➤ Lorraine and Ralph Lubin Visiting Professorship 1

Total Meetings/Seminars & Special Events

47

Kips Bay Renovation

- Completion/Move in February 16, 2001
- New Facilities
 - 11,122 Sq Ft; Capacity for 65 Faculty & Staff
 - 26 Single offices
 - 5 Double offices
 - 15 Administration work stations
 - 19 Research work stations
 - State-of-the-art Conference room
 - Renovated Lobby
 - Department Server/Network
 - High-End Research Computer
 - Digital Copier/Scanner

Faculty/Staff

Recruitment

Full Time Faculty

- Division of Outcomes Research
 - Nathaniel Hupert, MD, MPH – Assistant Professor
 - Paul Christos, MS, MPH – Lecturer
 - Bruce Schackman, PhD – Assistant Professor

- Division of Community & PH Program
 - J. Emilio Carillo, MD, MPH – Assistant Professor

- Division of Medical Ethics
 - Joseph J. Fins, MD, Chief

Faculty/Staff

Recruitment

Secondary Appointments/Voluntary Faculty

- Mark Green, MD – Adjunct Assistant Professor
- Havva Idriss, MPH – Lecturer in Public Health
- Edward Jones, MD – Assistant Professor of Public Health
- Robert Marx, MD – Assistant Professor of Public Health
- Hasan Meraj, MD – Research Associate in Public Health
- Farzad Mostashari, MD – Clinical Assistant Professor in Public Health
- Quihu Shi, PhD – Adjunct Assistant Professor of Biostatistics in Public Health
- Patricia Stone, PhD – Adjunct Assistant Professor of Public Health

Staff

- Five new full time positions (Outcomes and Ethics)

Searches in Progress

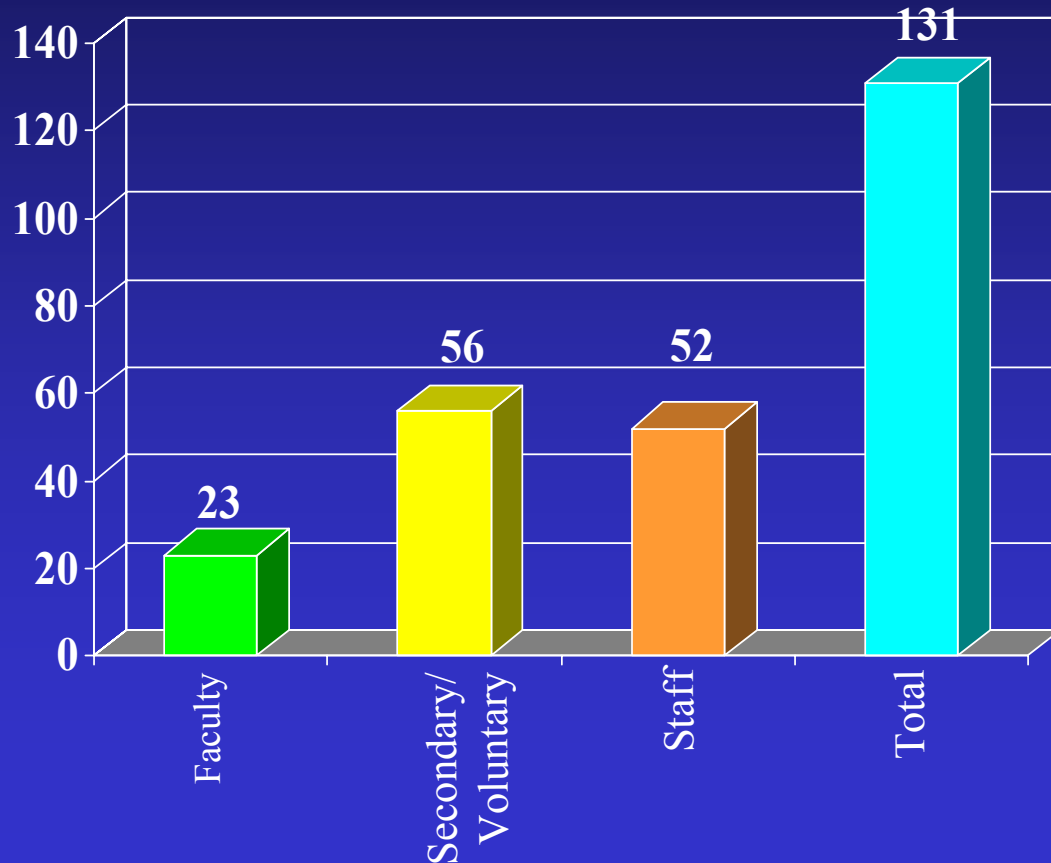
- Division Chief – Health Services & Policy Research
- Two full time faculty – Division of Outcomes and Effectiveness Research
- Two full time faculty – Division of Prevention and Health Behavior
- One full time faculty – Division of Medical Ethics

Faculty/Staff

Department Profile

(Snapshot as of June 30, 2001)

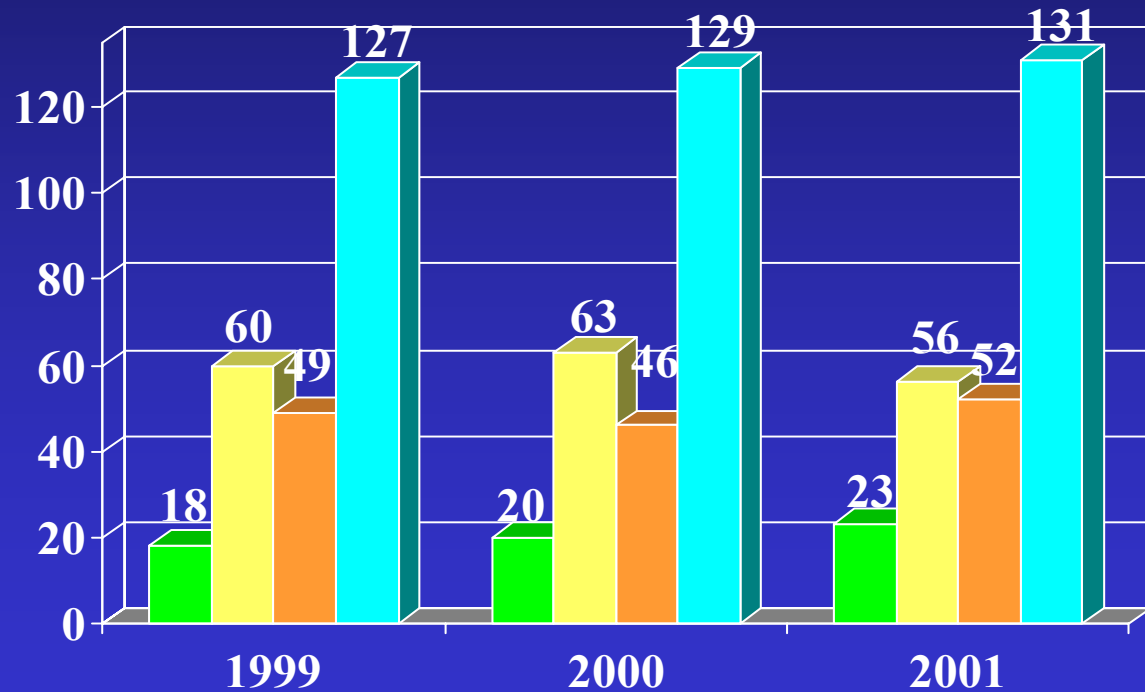
- Faculty
- Secondary/Voluntary Faculty,
Fellows, Emeriti
- Staff
- Total



Faculty/Staff

Department Profile (3 Year Trend)

- Faculty
- Secondary/Voluntary Faculty,
Fellows, Emeriti
- Staff
- Total



Grants & Contracts

Grants

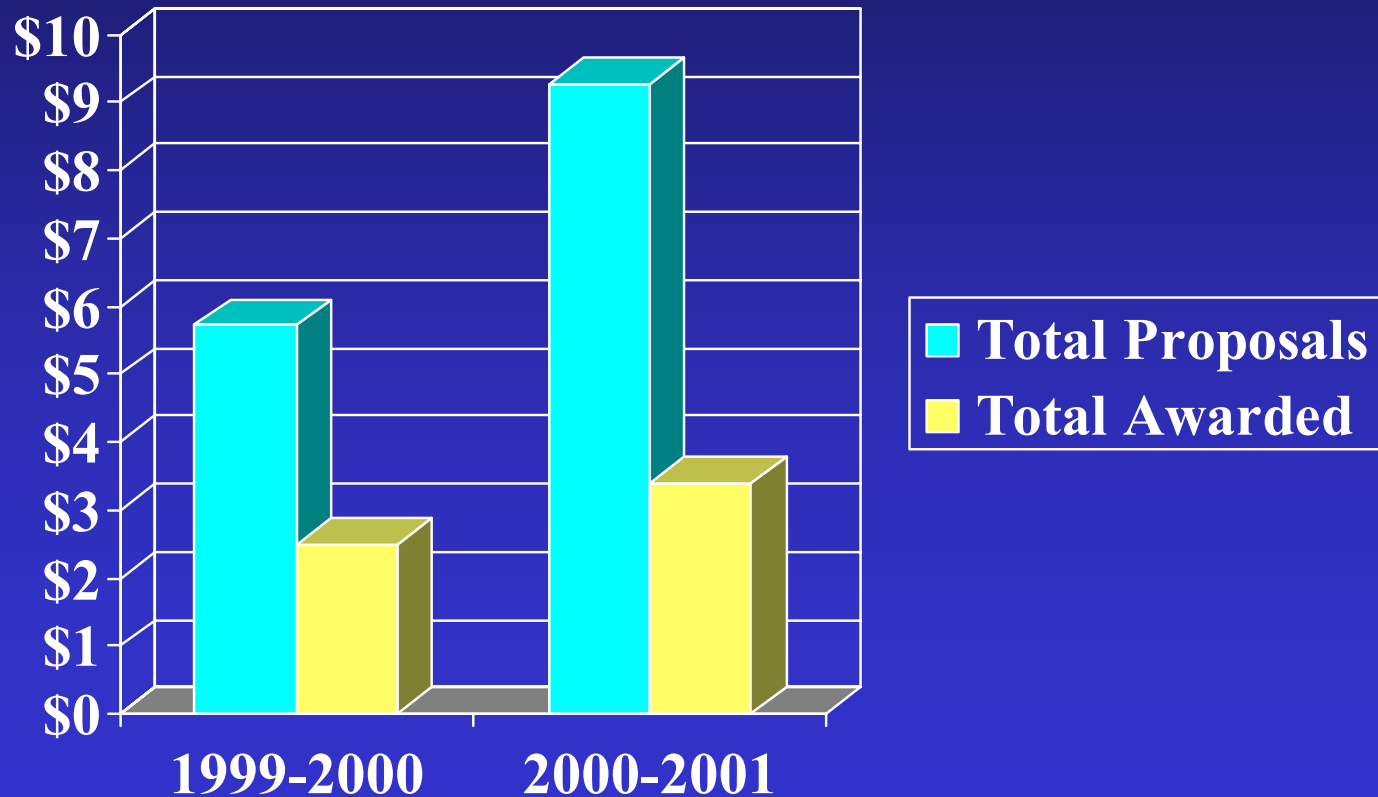
| | 1999-2000 | 2000-2001 |
|--|------------|-----------|
| Total Proposal Submitted | 16 | 25 |
| Total Proposal Dollars (Direct & Indirect) | 5,717,962 | 9,284,066 |
| Total New Awards Granted | 9 | 11 |
| Total New Awards Dollars | 2,482,024* | 3,401,156 |

*Excludes Gilbert Botvin Merit Award \$4.5m

Grants & Contracts

Grants

Millions



Grants & Contracts

Clinical Research Methodology Core

| | | |
|--|----|-----|
| Total Number of Projects | 54 | |
| Type of Service | | |
| Biostatistics | 49 | 91% |
| Methodological Advice | 5 | 9% |
| Number of Divisions/Offices that Utilized Core | 21 | |

Top Users: Pediatrics, Surgery, Medicine, Radiology & OBGyn

Grants & Contracts

Cornell Analytic/Consulting Services

| Client | Primary Consultant(s) | Contract Value |
|--------------------------------|---|----------------|
| Rogasin | Madelon Finkel, PhD/Hirsch Ruchlin, PhD Paul Christos, MS, MPH | 35,200 |
| Brooklyn Hospital | Madelon Finkel, PhD/Paul Christos, MS, MPH | 10,000 |
| Brooklyn Hospital | Madelon Finkel, PhD | 5,000 |
| N J U M & D | Madelon Finkel, PhD | 2,000 |
| WMC – Physician Organization | Madelon Finkel, PhD/Paul Christos, MS, MPH | 17,000 |
| Mount Sinai | Linda Gerber, PhD | 15,954 |
| Merck | Hirsch Ruchlin, PhD | 80,920 |
| Strategic Marketing Technology | Mark Callahan, MD | 30,000 |
| Total 8 Contracts | | 196,124 |

Educational Activities



New

- Evidence Based Medicine Course
- ACGME Reaccreditation of Residency in Preventive Medicine
- IRB Training
- MD/MPH (Columbia-Macy Program)
- MPH/PHD (Columbia, MSKCC)

Finances

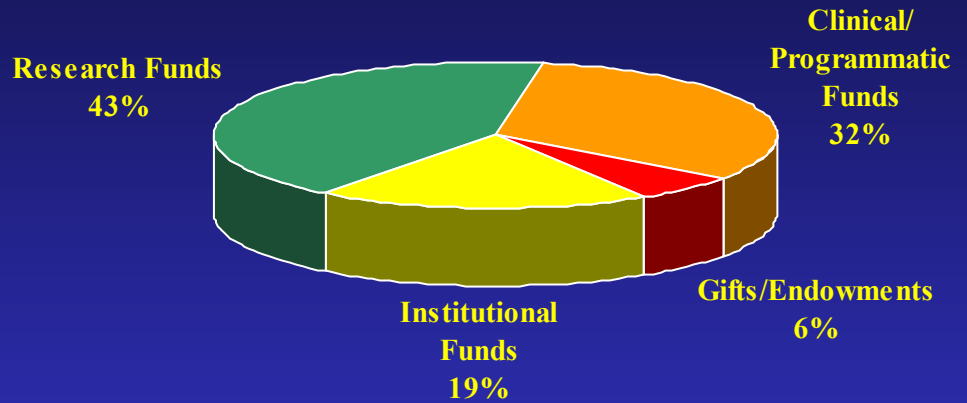
Financial Summary

July 1, 2000 to June 30, 2001

Sources

| | |
|-----------------------------|-----------|
| Clinical/Programmatic Funds | 2,747,155 |
| Gifts/Endowments | 531,443 |
| Institutional Funds | 1,622,316 |
| Research Grants/Contracts | 3,612,466 |

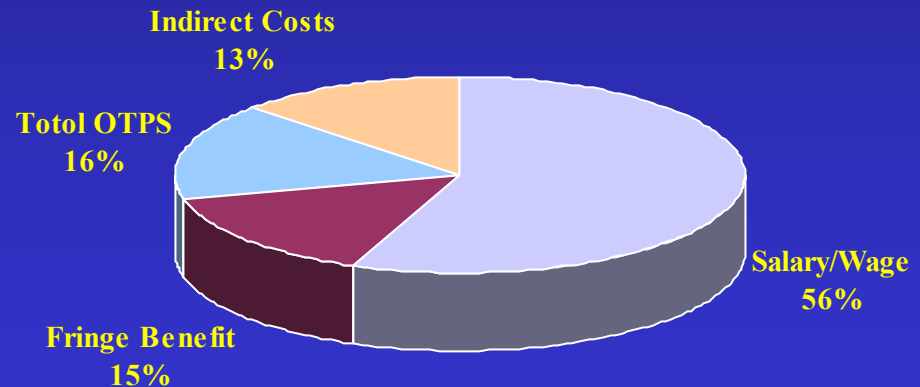
Total Department Funding 8,513,381



Uses

| | |
|----------------|-----------|
| Salary/Wage | 4,754,420 |
| Fringe Benefit | 1,297,716 |
| Total OTPS | 1,377,968 |
| Indirect Costs | 1,083,276 |

Total Expenses 8,513,381



Note: Does not include Medical Ethics and Adult Services Clinic – Transferred to Public Health on 7/1/01 and 9/1/01

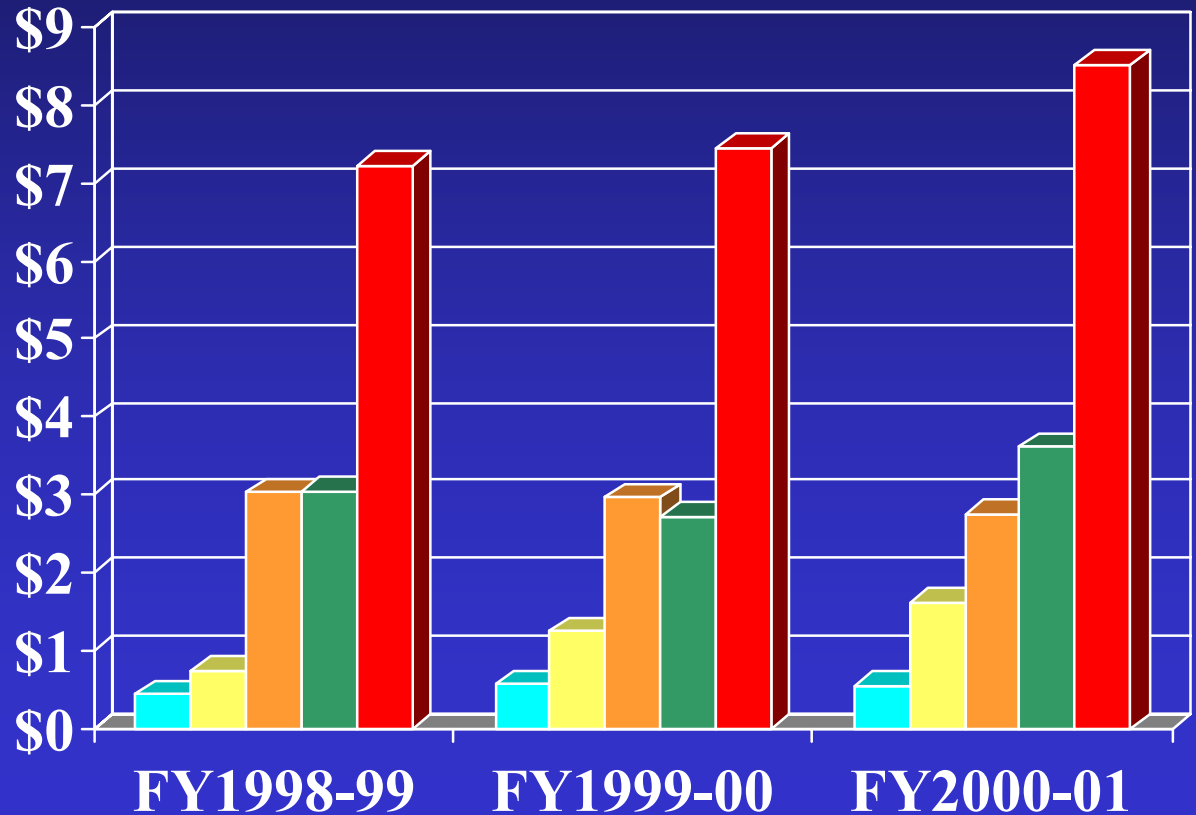
Finances

3-Year Trend Funding Sources

14% growth

Millions

- Gifts/Endowments
- Institutional Funds
- Clinical/Programmatic
- Research Grants/Contracts
- Total



Communications/Public Relations

Public Relations Materials

- Newsletter
- Website
- Annual Report

New

Events

- Holiday Party
- Open House
- Re-opening Event
- 1st Annual Picnic

New

The Department is “Cook’in”

